

Supplementary Materials for the Summary of Financial Reports 1Q, FYE June 30, 2022

November 15, 2021

Nippon Koei Co., Ltd.

IR Inquiries: Corporate Communication Office c-com@n-koei.co.jp

This presentation is provided for informational purposes only and is not intended to solicit any action. Presentation in the materials (including forecasts of financial results) is based on credible information available at the time of publication and certain assumptions Nippon Koei believes to be reasonable. Various factors may cause actual results to differ from the projected numbers or other expectations implied or expressed in this presentation.

1Q Results for FYE June 30, 2022

Revenue increased in all the segments mainly due to the recovery in overseas projects. Deficits peculiar to the first half were reduced by the profits in each stage.

(Millions of yen)	FYE21/6 1Q Results	FYE22/6 1Q Results	YoY Change	
			Amount	%
Orders	27,083	25,319	-1,764	93.5%
Revenue	21,053	23,960	2,906	113.8%
Gross profit	5,796	6,418	621	110.7%
Operating profit	-1,112	-320	792	-
Profit before tax	-1,295	-209	1,086	-
Profit attributable to owners of parent	-1,158	-264	893	-

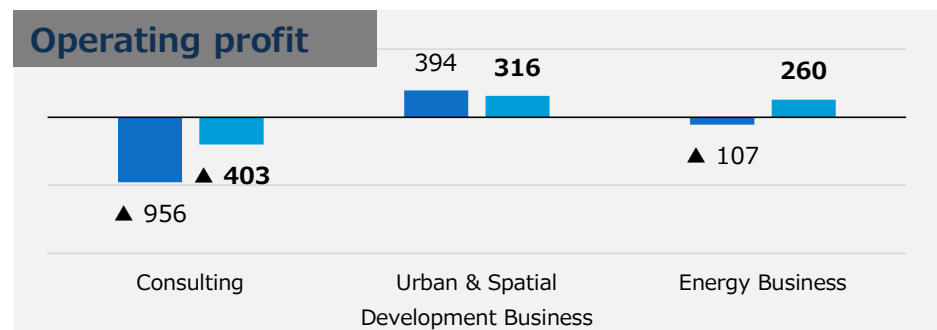
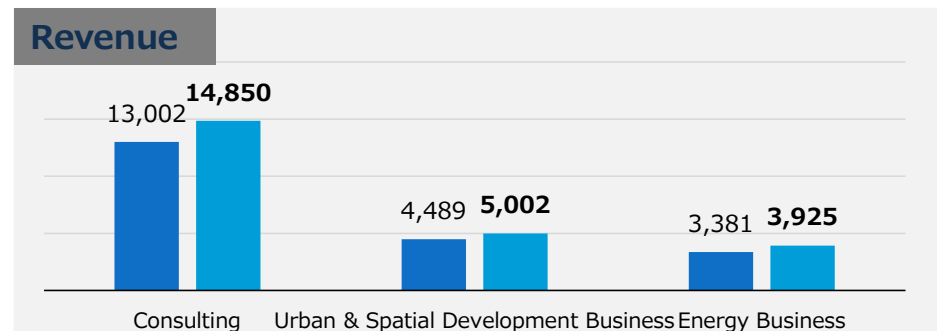
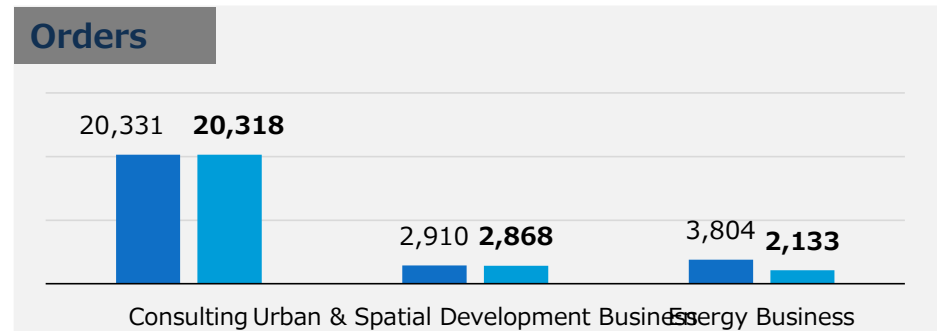
*The Group has applied International Financial Reporting Standards (IFRS) from the year-end of the fiscal year ended June 30, 2021. The figures for the previous consolidated first quarter are also disclosed based on IFRS.

- Orders received decreased year on year due to a reactionary decrease from the previous fiscal year when orders for large-scale projects were received in the energy business.
- Revenue increased in all the segments. It was strong especially due to the recovery in overseas projects in the consulting business from the same period of the previous year when travel restrictions were imposed.
- Deficits usually peculiar to the first half of the year were reduced by strong overseas performance in the consulting business and eliminating transient factors in the energy business.

Results by Business Segment

(Millions of yen)	FYE21/6 1Q Results	FYE22/6 1Q Results	YoY Change	
			Amount	%
Orders	27,083	25,319	-1,764	93.5%
Consulting Business	20,331	20,318	-13	99.9%
Urban & Spatial Development Business	2,910	2,868	-41	98.6%
Energy Business	3,804	2,133	-1,671	56.1%
Real Estate Leasing and Other	37	-	-37	-
Revenue	21,053	23,960	2,906	113.8%
Consulting Business	13,002	14,850	1,847	114.2%
Urban & Spatial Development Business	4,489	5,002	512	111.4%
Energy Business	3,381	3,925	544	116.1%
Real Estate Leasing and Other	180	181	1	100.9%
Operating profit	-1,112	-320	792	-
Consulting Business	-956	-403	552	-
Urban & Spatial Development Business	394	316	-77	80.3%
Energy Business	-107	260	367	-
Other	-443	-493	-50	-

■ FYE21/6,1Q ■ FYE22/6,1Q (Millions of yen)



Overview by segment

Consulting Business

- Orders: About the same as the same period of the previous year because orders for some large-scale overseas projects were recorded in a year different from the one when they should be originally recorded although local government projects were strong due to favorable market conditions in Japan
- Revenue: Increased due to steady progress in orders received for projects in Japan and stronger overseas orders received than the same period of the previous year when travel restrictions were imposed
- Operating profit: Deficits shrank in the entire consulting business due to the rise in overseas operation rates

Urban & Spatial Development Business

- Orders : Slightly decreased year on year due to the postponement of low-profitability projects at BDP in the UK
 - Revenue : Increased due to the favorable progress of orders received in the previous fiscal year at BDP in the UK
 - Operating profit : Decreased due to an increase in general administrative expenses due to the transfer of some segments of projects in Japan and the reaction to the influence of COVID-19 at BDP
- *The actual exchange rate in Q1 of FYE June 30, 2022: £ 1=151.48 yen (assumed exchange rate for FYE June 30 2022: £ 1=151.65 yen)

Energy Business

- Orders : Decreased year on year due to a reactionary decrease from the previous fiscal year when orders for multiple large-scale projects were received and (some) orders were recorded in a year different from the one when they should be originally recorded
- Revenue : Increased because the temporary extension of the construction period was resolved mainly in the engineering department and also the projects in the production department progressed steadily
- Operating profit : Returned to the black because temporary construction loss allowances were eliminated and in-house production progressed

Project introduction (Consulting Business / in Japan)

Comprehensive Road Management Project in Fuchu City, Tokyo

Orderer

Fuchu City Government in Tokyo

Overview of the project

- A public-private partnership project to improve civil services and improve the efficiency of maintenance and management by utilizing the know-how of private business operators by collectively outsourcing multiple business activities such as pavement repair and roadside tree pruning.
- By providing Manesus, a maintenance management support system developed by the Company, information is shared in real time between the manager and the vendor to give support for efficient maintenance and management.
- We provided more efficient and advanced maintenance management while utilizing accumulated data.



Manesus screen image

Shizuoka Airport Runway End Safety Area (RESA) Expansion and Maintenance Project

Orderer

Shizuoka Prefectural Government

Overview of the project

- A plan to create new high embankments on the existing embankments in association with expansion and maintenance in the Shizuoka Airport Runway End Safety Area (RESA)
- We performed a construction implementation design and an embankment structure detail design for the RESA site, and also conducted seismic performance verification through seismic response analysis in order to cope with imminent large-scale earthquakes.

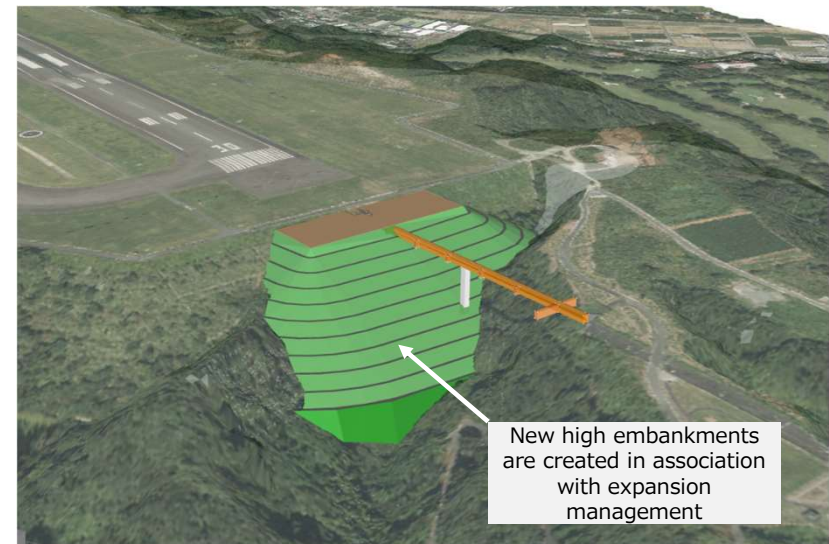


Image of expansion and maintenance in the Runway End Safety Area (RESA)

NIPPON KOEI

Project introduction (Consulting Business / in Japan)

Utilization of digital technology for disaster prevention information sharing

- Orderer** Infrastructure DX Promotion Office, Planning Department, Ministry of Land, Infrastructure, Transport and Tourism Kyushu Regional Development Bureau
- Overview of the project**
- Examination and trial of measures to utilize digital technology to quickly and accurately share information at disaster sites
 - 3D data of the disaster site is created with omnidirectional (360-degree) cameras, etc., and VR (virtual reality), etc. are used
 - A record of the disaster site is made and information is shared via the Internet in real time with multiple locations to utilize it for disaster assessment and recovery method examination
 - We proposed mechanisms and systems for promoting the spread of digital technology and developing human resources, etc. in disaster response

Investigation and examination for drawing up reconstruction plans for Tokyo metropolitan sewerage facilities

- Orderer** Tokyo Metropolitan Gov., Bureau of Sewerage
- Overview of the project**
- Although a large number of sewerage facilities developed after the period of high economic growth have been reconstructed, as more and more facilities will reach their legal useful life (50 years), there is an urgent need to establish a strategic and systematic reconstruction and maintenance technique
 - We examined policies for reconstructing sewage pipes in eight wards (2nd phase) including Shinagawa Ward and Ota Ward from the viewpoints of status of facilities, economic efficiency, construction capabilities, etc. and proposed priority of measures utilizing asset management technique among others

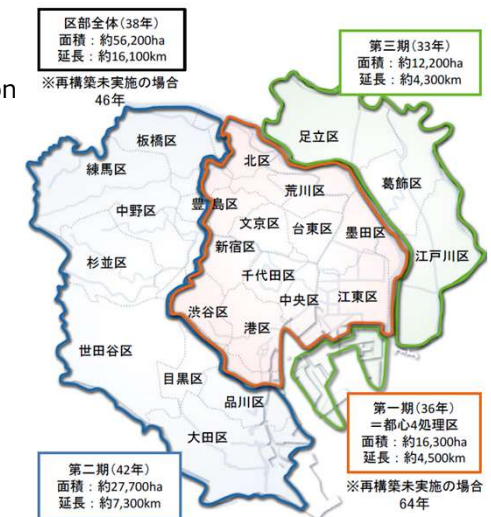
Source of the image: Tokyo Metropolitan Government Bureau of Sewerage website "Management Plan 2021"

Chat with the site from the VR conference room

Information is shared with the field from within the VR conference room



■ Reconstruction area



NIPPON KOEI

Project introduction (Consulting Business / overseas)

Project to improve ability to mitigate sediment disaster risk in Ecuador

Orderer

JICA

Overview of the project

- Sediment disasters are one of the most serious natural disasters in Ecuador. The city of Quito, the capital with a population of about 2 million, is considered to be one of the most vulnerable cities to sediment disasters
- In this project, we observed topography and ground deformation using satellite images, created hazard maps and their manuals and drew up land use regulation standards
- We helped the Quito City government and the Geological and Energy Research Institute (Instituto de Investigación Geológico y Energético: IIGE) improve their ability to analyze and evaluate sediment disaster risks and construct an early warning framework



Preparatory investigation for advanced road traffic system implementation plans in Mombasa County, Kenya

Orderer

JICA

Overview of the project

- In Mombasa, which is the gateway to the East African region, further traffic congestion is expected due to the recent population increase as well as development of the Mombasa Gate Bridge, the second Nyali Bridge and the Mombasa Special Economic Zone, etc.
- In this research, in order to implement Japanese-style intelligent transport systems (ITS) at major intersections in the city and implement projects to facilitate traffic, we examined the contents and scale of implementation
- As it was necessary to locally establish the ITS operation and maintenance management capabilities in order for this project to achieve sustainable results, we conducted a concrete examination of measures for strengthening the local organizational structure and technology transfer at the same time



Project introduction (Urban & Spatial Development Business)

Iwaki Smart Town Model District Promotion Project

Orderer
Overview of the project

- Iwaki City Government in Fukushima Prefecture
- A project to be proceeded with the co-creation of the public and private sectors in order to develop a model to take the lead for Smart City realization to resolve the issues that new towns and the entire city have and formation of urban spaces with an eye on a post-corona society
 - The Company is supporting the formation of basic strategies (concepts of town development), examining and building a collaboration scheme between the local government and private business operators such as developers and smart service providers, promoting public understanding and supporting consensus-building

Source of the image: The second Iwaki Smart Town Model District Promotion Project meeting material

Intended area

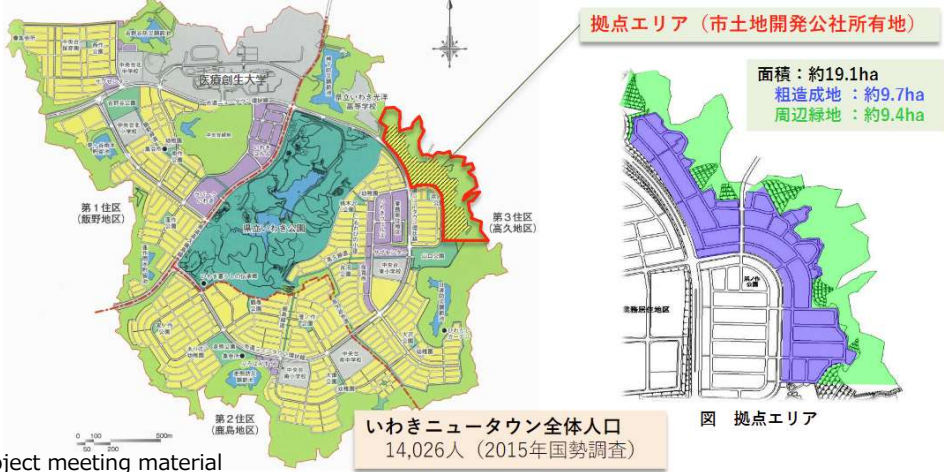


図 いわきニュータウン地区全体図 (面積約530ha)

Renovation and decarbonization of Glasgow's Queen Street Station in the United Kingdom

Orderer
Overview of the project

- Network Rail
- For Scotland's Railway, we created a new concourse and renovated the station to help them address decarbonization and cope with the increasing number of passengers
 - We renovated the historic station into a symbolic and modern landmark station as a gateway to Glasgow
 - BDP, a group company of the Company, was in charge of architectural design, equipment design, lighting, sound, graphics, human flow analysis and green building evaluation



Project introduction (Energy Business)

Nasuno Substations No. 3 and No. 4 transformer renewal work

Orderer TEPCO Power Grid

Overview of the project

- Construction work to update the No. 3 and No. 4 transformers (154 kV/66 kV) from 100 MVA to 200 MVA as an enhancement in association with the renewable energy power source connection project invitation process in the northern and central areas of Tochigi Prefecture
- The Company carried out transformer foundation work and electrical work
- As of November 2021, No. 4 transformer foundation work is underway



Olkaria-Lessos-Kisumu Transmission Lines Project, Kenya

Orderer Kenya Electricity Transmission Company Limited (KETRACO), Kenya

Overview of the project

- A transmission line construction project to strengthen power supply to the western and northern regions from the southern Olkaria geothermal area
- It helps to reduce power transmission loss and promotes the use of clean energy in order to ensure stable power supply to regions where tight power demand is expected and transmit power with a higher voltage than before
- The main scope is construction of new transmission lines (400 kV: 228 km, 220 kV: 70 km, 132 kV: 9.0 km) and construction of new substations (220/132/33 kV). The Company was in charge of design, bidding support and construction supervision
- Power transmission started on one of the two transmission lines in July 2021



400 kV transmission line



New substation

FYE June 2022 Forecast

No changes have been made to the forecast for the entire FYE June 2021 period. Revenue and operating profit are expected to set new record highs year on year.

(Millions of yen)	FYE 2021/6 Results	FYE 2022/6 Plan	YoY Change	
			Amount	%
Orders	133,304	130,000	-3,304	97.5%
Consulting Business	97,769	95,000	-2,769	97.2%
Urban & Spatial Development Business	21,457	20,000	-1,457	93.2%
Energy Business	13,991	15,000	1,008	107.2%
Revenue	117,859	131,000	13,140	111.1%
Consulting Business	80,098	89,000	8,901	111.1%
Urban & Spatial Development Business	20,274	21,000	725	103.6%
Energy Business	16,621	20,000	3,378	120.3%
Real Estate Leasing and Other	865	1,000	134	115.6%
Operating profit	7,128	7,700	571	108.0%
Consulting Business	7,981	7,700	-281	96.5%
Urban & Spatial Development Business	2,266	1,500	-766	66.2%
Energy Business	-1,061	1,700	2,761	-
Real Estate Leasing and Other	-2,058	-3,200	-1,141	-
Profit attributable to owners of parent	4,531	4,700	169	103.7%

*Figures in three segments for FYE 21/6 are simple aggregations before intercompany eliminations.

*Please see page 12 for the method of segmentation into three segments and page 14 for the reference values for five segments.

Appendix

Change of Business Segments (From FYE June 2022)

In order to further promote collaboration, we will change from the previous five business segments to three.

Up to FYE June 2021 (before the revision)

Segment	Major group companies
Domestic Consulting	Tamano Consultants Co., Ltd. Nippon Civic Consulting Engineers Co., Ltd. El Koei Co., Ltd.
International Consulting	Koei Research & Consulting Inc. Nippon Koei Latin America-Caribbean Co., Ltd. NIPPON KOEI LAC, INC. NIPPON KOEI INDIA PVT. LTD. NIPPON KOEI VIETNAM INTERNATIONAL CO., LTD. PHILKOEI INTERNATIONAL, INC. PT. INDOKOEI INTERNATIONAL MYANMAR KOEI INTERNATIONAL LTD.
Urban & Spatial Development	BDP HOLDINGS LIMITED BUILDING DESIGN PARTNERSHIP LIMITED QUADRANGLE ARCHITECTS LIMITED Kisho Kurokawa Architect & Associates
Power Engineering	Koei System Inc.
Energy	KOEI Energy Co., Ltd. NIPPON KOEI ENERGY EUROPE B.V. PT. CIKAENGAN TIRTA ENERGI IRONMONT HYDRO PTE. LTD

From FYE June 2022 (after the revision)

Segment	Major group companies
Consulting	Tamano Consultants Co., Ltd. Nippon Civic Consulting Engineers Co., Ltd. EL Koei Co., Ltd. Koei Research & Consulting Inc. Nippon Koei Latin America-Caribbean Co., Ltd. NIPPON KOEI LAC, INC. NIPPON KOEI INDIA PVT. LTD. NIPPON KOEI VIETNAM INTERNATIONAL CO., LTD. PHILKOEI INTERNATIONAL, INC. PT. INDOKOEI INTERNATIONAL MYANMAR KOEI INTERNATIONAL LTD. PT. CIKAENGAN TIRTA ENERGI
Urban & Spatial Development	BDP HOLDINGS LIMITED BUILDING DESIGN PARTNERSHIP LIMITED QUADRANGLE ARCHITECTS LIMITED Kisho Kurokawa Architect & Associates
Energy	Koei System Inc. KOEI Energy Co., Ltd. NIPPON KOEI ENERGY EUROPE B.V. IRONMONT HYDRO PTE. LTD

FYE 21/6
Transfer of NK Urban
Development Dept.

Transfer to Urban &
Spatial Development in
FYE 23/6

[Reference] FYE June 30, 2022 1Q Results for Each of the Five Business Segments (IFRS)

(Millions of yen)	FYE21/6 1Q Results	FYE22/6 1Q Results	YoY Change	
			Amount	%
Orders	27,083	25,319	-1,764	93.5%
Domestic Consulting	16,662	16,764	101	100.6%
International Consulting	3,669	3,553	-115	96.9%
Power Engineering	3,769	2,090	-1,679	55.5%
Urban & Spatial Development	2,910	2,868	-41	98.6%
Energy	34	42	7	122.6%
Revenue	21,053	23,960	2,906	113.8%
Domestic Consulting	8,614	8,585	-29	99.7%
International Consulting	4,388	6,265	1,877	142.8%
Power Engineering	3,192	3,663	471	114.8%
Urban & Spatial Development	4,489	5,002	512	111.4%
Energy	189	262	73	138.7%
Other	180	181	1	100.9%
Operating profit	-1,112	-320	792	-
Domestic Consulting	-967	-927	40	-
International Consulting	9	523	514	5649.1%
Power Engineering	-148	219	367	-
Urban & Spatial Development	394	316	-77	80.3%
Energy	36	36	0	100.1%
Other	-437	-489	-52	-

*Since the business segments are reorganized into three segments from FYE June 2022, these are estimated values calculated for the conventional five business segments for reference.

[Reference] FYE June 30, 2022 Forecast for Each of the Five Business Segments (IFRS)

(Millions of yen)	FYE 2021/6 Results	FYE 2022/6 Plan	YoY Change	
			Amount	%
Orders	133,304	130,000	-3,304	97.5%
Domestic Consulting	62,047	62,000	-47	99.9%
International Consulting	35,721	33,000	-2,721	92.4%
Power Engineering	13,880	15,000	1,119	108.1%
Urban & Spatial Development	21,457	20,000	-1,457	93.2%
Energy	111	0	-111	-
Revenue	117,859	131,000	13,140	111.1%
Domestic Consulting	55,345	58,000	2,654	104.8%
International Consulting	24,753	31,000	6,246	125.2%
Power Engineering	15,831	19,000	3,168	120.0%
Urban & Spatial Development	20,274	21,000	725	103.6%
Energy	790	1,000	209	126.5%
Real Estate Leasing and Other	865	1,000	134	115.6%
Operating profit	7,128	7,700	571	108.0%
Domestic Consulting	6,128	5,700	-428	93.0%
International Consulting	1,853	2,000	146	107.9%
Power Engineering	858	1,900	1,041	221.4%
Urban & Spatial Development	2,266	1,500	-766	66.2%
Energy	-1,919	-200	1,719	-
Real Estate Leasing and Other	-2,058	-3,200	-1,141	-

*Since the business segments are reorganized into three segments from FYE June 2022, these are estimated values calculated for the conventional five business segments for reference.