



Supplementary Materials on Financial Results for the 1st Quarter of FYE June 30, 2025

November 13, 2024

Integrated Design & Engineering Holdings Co., Ltd.

Stock code : 9161

Orders decreased year-on-year due to the absence of large-scale orders received in the previous fiscal year. Revenue and core operating profit increased year-on-year.

Consolidated
results

- For orders, the **Energy Business made a major contribution**. Overall orders, however, decreased due to the absence of large-scale orders for BDP recorded in the same period last year.
- **Revenue increased year-on-year because the performance of all three segments remained steady.**
- Operating profit **increased substantially year-on-year** owing to an increase in gross profit, despite recording of a loss on valuation of securities in the Consulting Business. European operations of the Energy Business contributed to the profits.
- Loss further increased due to foreign exchange losses resulting from exchange rate fluctuations since the end of the previous fiscal year.

(Million yen)	FYE 2024/6 1Q Results	FYE 2025/6 1Q Results	YoY Comparison	
			Amount	%
Orders	38,152	34,620	-3,532	90.7%
Revenue	31,306	33,560	2,253	107.2%
Gross profit	8,474	9,791	1,317	115.5%
Operating loss	-562	-134	428	-
Core operating profit or loss*	-597	375	972	-
Loss before tax	-265	-2,231	-1,966	-
Loss attributable to owners of parent	-335	-2,262	-1,927	-

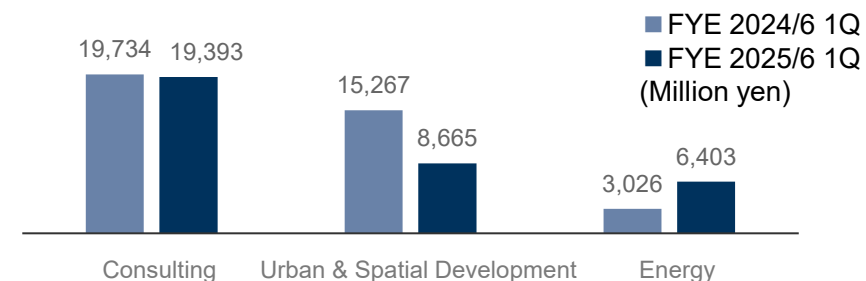
*Core operating profit is calculated from operating profit (or loss) after IFRS, excluding gains and losses arising from non-recurring factors.

Results by Business Segment

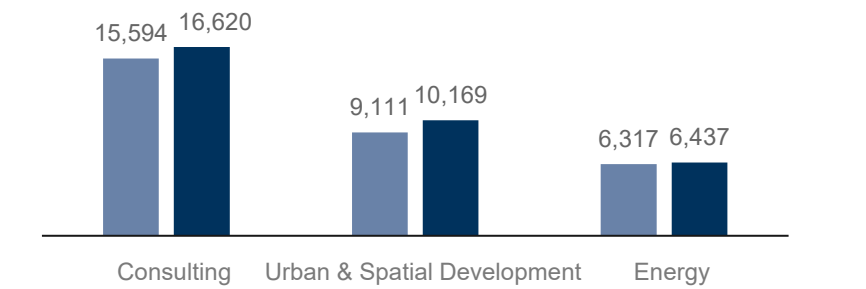


(Million yen)	FYE 2024/6 1Q Results	FYE 2025/6 1Q Results	YoY Comparison	
			Amount	%
Orders	38,152	34,620	-3,532	90.7%
Consulting	19,734	19,393	-340	98.3%
Urban & Spatial Development	15,267	8,665	-6,601	56.8%
Energy	3,026	6,403	3,377	211.6%
Other	123	157	33	126.9%
Revenue	31,306	33,560	2,253	107.2%
Consulting	15,594	16,620	1,026	106.6%
Urban & Spatial Development	9,111	10,169	1,058	111.6%
Energy	6,317	6,437	119	101.9%
Other	282	332	49	117.5%
Operating profit	-562	-134	428	-
Consulting	-504	-1,584	-1,080	-
Urban & Spatial Development	-40	252	293	-
Energy	117	1,068	950	906.7%
Other	-135	129	264	-
Core operating profit*	-597	375	972	-
Consulting	-644	-696	-51	-
Urban & Spatial Development	-106	184	290	-
Energy	251	917	666	365.2%
Other	-97	-29	67	-

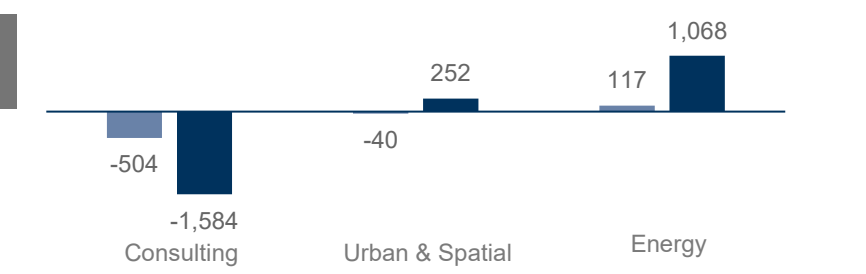
Orders



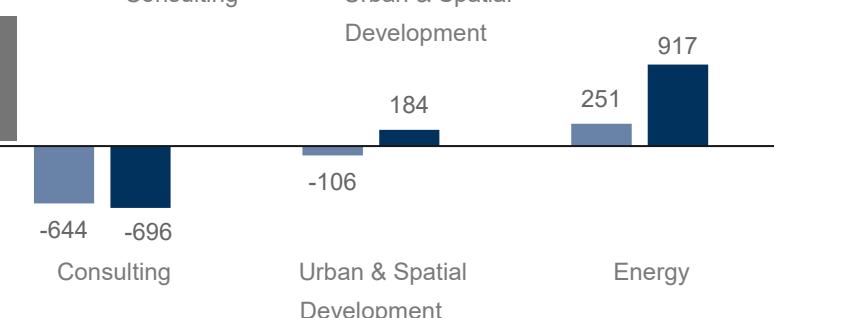
Revenue



Operating profit



Core operating profit



*Core operating profit is calculated from operating profit (or loss) after IFRS, excluding gains and losses arising from non-recurring factors.

Consulting Business

- Orders : Orders decreased year-on-year despite the contribution of orders for domestic defense-related work and those related to the 2024 Noto Peninsula Earthquake.
- Revenue : Revenue increased owing to steady progress in ongoing projects mainly from NK domestic and overseas group companies.
- Operating profit : Core operating profit was at the same level as the same period of the previous fiscal year, due to strong performance in NK domestic, despite a decline in profit margin resulting from the overseas operations underperforming year-on-year. As an extraordinary factor, we posted a loss on valuation of securities of approx. 1.0 billion yen.

Urban & Spatial Development Business

- Orders : Orders decreased year-on-year due to the absence of large-scale projects that the BDP Group received in the same period of the previous fiscal year.
- Revenue : Revenue increased owing to steady progress in ongoing projects engaged by NKUrban and BDP Group.
- Operating profit : Operating profit increased thanks to increased revenues in NKUrban and the BDP Group.

* Actual exchange rate in 1Q FYE 2025/6: 1 £ =192.39 Yen (Actual exchange rate in June 2024: 1 £ =183.19 Yen; planned exchange rate for FYE June 2025: 1 £ = 185.42 yen)

Energy Business

- Orders : Orders increased substantially year-on-year as we recorded an order for a large-scale project to build a renewable energy grid in Japan.
- Revenue : Revenue increased due to the steady progress of projects related to control systems, and hydraulic systems and equipment in the manufacture section.
- Operating profit : The European battery storage business made a major contribution to the profit. We also saw progress in highly productive projects in Japan, resulting in a substantial increase in profits.

FYE June 2025 Forecast

Aiming for record-high orders received, revenue, and core operating profit, while planning to make upfront investment in digital transformation and human resources.

(Million yen)	FYE 2024/6 Results	FYE 2025/6 Plan	YoY Comparison	
			Amount	%
Orders	161,357	168,000	6,642	104.1%
Consulting	86,568	94,000	7,431	108.6%
Urban & Spatial Development	49,874	47,000	-2,874	94.2%
Energy	24,446	27,000	2,553	110.4%
Revenue	158,983	165,000	6,016	103.8%
Consulting	85,488	90,000	4,511	105.3%
Urban & Spatial Development	44,460	47,000	2,539	105.7%
Energy	27,925	27,000	-925	96.7%
Other	1,109	1,000	-109	90.1%
Operating profit	14,124	12,200	-1,924	86.4%
Consulting	10,647	8,100	-2,547	76.1%
Urban & Spatial Development	1,968	3,000	1,031	152.4%
Energy	2,470	2,400	-70	97.2%
Other	-961	-1,300	-338	-
Profit attributable to owners of parent	9,677	7,300	-2,377	75.4%
ROE	11.3%	8.0%	-3.3pt	-

Comparison of core operating profit

Below is a comparison on a core operating profit basis to show the earnings trend of our core business. (No special factors are incorporated in the FYE 2025/6 Plan.)

Core operating profit for FYE 2025/6 is planned to achieve a year-on-year increase.

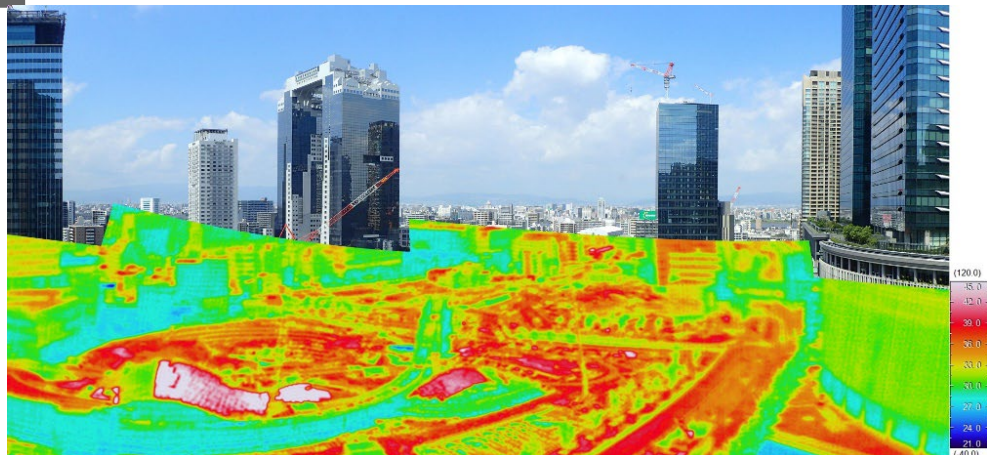
▼ Analysis of change in core operating profit for FYE June 2024 results and FYE June 2025 plan

(Million yen)	FYE 2024/6 Results	FYE 2025/6 Plan	YoY Comparison
Core operating profit	12,031	12,200	168
Consulting Business	7,814	8,100	285
Urban & Spatial Development Business	2,341	3,000	658
Energy Business	2,897	2,400	-497
Other	-1,022	-1,300	-277

Project Highlights (Consulting Business)

Preliminary Survey for Effectiveness Evaluation of Green Infrastructure Development

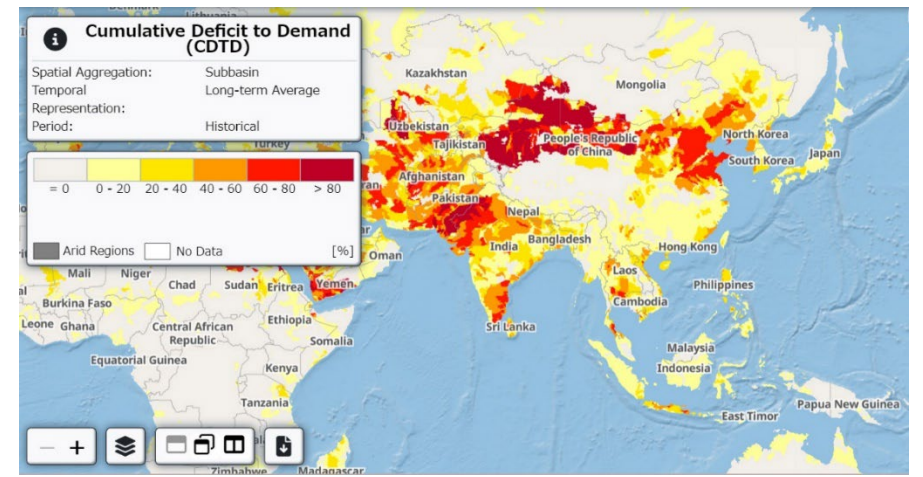
- | | |
|-----------------|--|
| Client | Urban Renaissance Agency (UR) |
| Overview | <ul style="list-style-type: none"> ■ In the 'Umekita 2 section,' north of JR Osaka Station, development of Umekita Park is underway, which will be one of the world's largest urban parks directly adjacent to a large-scale terminal station. ■ NK conducted a pre-development environmental survey and studied the post-development effects to quantitatively and qualitatively evaluate the effects of green infrastructure development in urban redevelopment and city planning around the park, thereby contributing to enhanced awareness on the importance of green infrastructure in society and the promotion green transformation (GX). In addition to assessing the survey items, we drew up a timeline for the future based on the project's progress and a plan for assessing the ripple effects on the surrounding area, such as changes in biodiversity, human traffic, and how people spend their time in urban areas. |



Sample of thermal environment evaluation (Overlay of thermal image on visible image)

Development and Launch of a Platform for Global Water Risk Assessment

- | | |
|-----------------|--|
| Overview | <ul style="list-style-type: none"> ■ The University of Tokyo, Suntory, and NK have jointly developed the Water Security Compass, the world's first online platform that enables users to assess future water scarcity risks based on water demand and supply across various regions by water usages. ■ By incorporating the effects of seasonal changes and dams and other infrastructure on water quantity into simulations, this is the world's first online platform that accurately identifies the amount of water needed and supplied in each region of the world and visualizes how much water resources will be in short supply for which uses, now and in the future. ■ The Water Security Compass was made available to the public free of charge since the summer 2024 and aims to support research on water resources across diverse fields, including industry, government, and academia. https://water-sc.diasjp.net/beta/jp/ |
|-----------------|--|



Sample image of the Water Security Compass

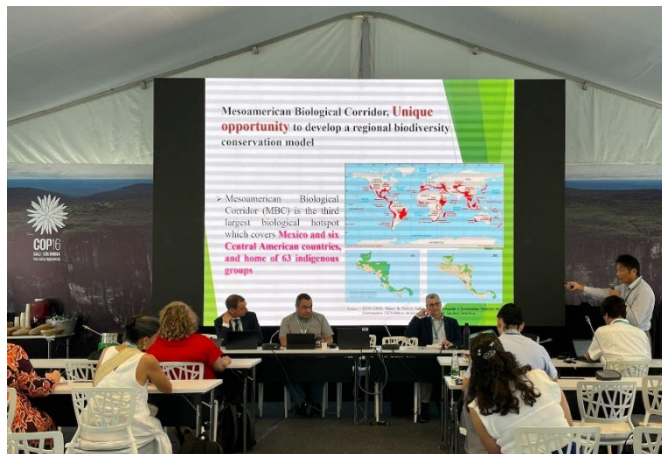
Project Highlights (Consulting Business)

Advisory Service for Strengthening a Conservation Model for Transboundary Ecosystems in the SICA Region, Central America

Client Japan International Cooperation Agency (JICA)

Overview

- Due to geographical and climatic conditions, Central America, including coastal areas, has a rich biodiversity. However, biodiversity conservation in the region has faced many challenges, as biodiversity is managed individually according to national and prefectural boundaries, even within the same ecosystem. JICA has implemented projects to strengthen the capacity of countries in Central America for integrated management and conservation of biodiversity.
- NK aims to establish a policy/model for transboundary ecosystem conservation developed by the preceding projects and ensure its implementation. We will leverage our technical expertise while ensuring consistency with each country's biodiversity and environmental policies.



Presentation at the 16th Conference of the Parties to the Convention on Biological Diversity (CBD COP16)

Support for Enhancing ADB Climate Change Adaptation Investment Planning for Bangladesh

Client Asian Development Bank (ADB)

Overview

- Bangladesh is highly vulnerable to climate change, incurring annual losses of approximately 3 billion dollars. Low-income individuals, women, and children are especially at risk from the impacts of climate disasters.
- ADB is committed to tackling climate change, building disaster resilience, and enhancing environmental sustainability.
- In this project, NK and its group company, NK Bangladesh, will develop a sector-specific investment roadmap to respond to climate change, thereby supporting ministries and agencies in attracting domestic and foreign investments and promoting sustainable development.



Project Highlights (Urban & Spatial Development Business)

Redevelopment of Geylang Serai (Malay Settlement) in Singapore

Client	Housing & Development Board
Overview	<ul style="list-style-type: none"> BDP worked on the design, architecture and urban planning for the redevelopment project of Geylang Serai, the largest Malay settlement in Singapore. The project was completed in September 2024, and the ceremony was attended by the Prime Minister of Singapore. Incorporating traditional Malay architectural motifs (such as woodwork, geometric patterns and simple, functional design), the area was redeveloped into an iconic space connecting the past and the future. In addition, a public space for gathering of local communities, multipurpose facility, and exhibition gallery were designed to create opportunities for residents and visitors to share cultural and historical experience and deepen connections.



Landmark Gateway Arch and crossroad

Review and Planning of the Basic Concept for Urban Development Around Higo-Ozu Station

Client	Ozu Town, Kumamoto Prefecture
Overview	<ul style="list-style-type: none"> The basic concept for the development of the area around Higo-Ozu Station aims to solve the problems that the station has been facing. Another goal is to revitalize the surrounding area, which is the heart of the vibrant and bustling community. This revitalization will fully utilize opportunities such as the TSMC's expansion into the area and the decision made to select the Higo-Ozu route for the airport access railway line. The concept intends to draw up a vision for the future to revitalize the local economy, attract businesses, and encourage people to settle down, by spreading the effects of the development throughout the town. During 2024, NKUrban continued to receive the work to formulate basic plan. The company has been examining approaches for urban development, planning social experiments, and providing support in holding relevant meetings.



Future image of the Higo-Ozu Station area

(Source: [Basic Concept for Urban Development Around Higo-Ozu Station](#))

Groundbreaking Ceremony of Akita Rinkai Processing Center

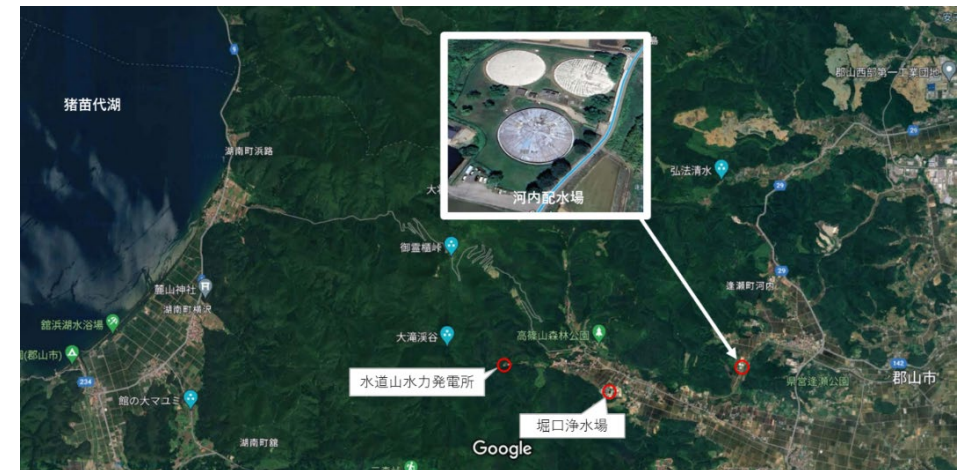
Client	Akita Prefecture
Overview	<ul style="list-style-type: none"> ■ On November 8, 2024, a groundbreaking ceremony was held at Akita Prefectural Budokan to pray for the safety of construction project, that aims to make the Akita Rinkai Processing Center of Akita Prefecture an energy supply base. ■ As the biggest micro grid in Japan, this project will provide renewable energy power to 10 public facilities in Mukaihama district. Energy supply and demand will be balanced using storage batteries, energy management systems (EMS), hydrogen production, and utilization facilities. NKES participates in design, construction, and operation as a project principal, leveraging its expertise in storage batteries and EMS, which are at the core of microgrids. ■ With this project, more than 70% of the approx. 22,000 MWh of electricity consumed by all facilities in a year will be replaceable with renewable energy.



Rendering of Akita Rinkai Processing Center

Installation of Small Hydraulic Generator at Kozu Water Distribution Center in Koriyama, Fukushima

Client	Koriyama City, Fukushima Prefecture
Overview	<ul style="list-style-type: none"> ■ At the Kozu Water Distribution Center, the flow regulating valve is being replaced because it has exceeded its service life. The project also installs a micro hydro generator. This takes advantage of the area's potential for hydroelectric power generation due to its water volume and elevation difference. ■ A corporate group led by NKES undertakes EPC projects for water supply facilities commissioned by the City's Water and Sewerage Bureau. Also, it independently operates a micro hydro generation project. ■ The project is expected to support Koriyama City's goal of achieving carbon neutrality while also helping to reduce operating costs and electricity bills for its facilities.



Micro hydro generator at Kozu Water Distribution Center



Inquiries on IR-related matters

Corporate Communication Office, Integrated Design & Engineering Holdings Co., Ltd

MAIL: c-com@n-koei.co.jp

This presentation is provided for information purposes only and is not intended to solicit any action. Materials in this presentation (including forecasts of financial results) have been prepared based on credible information available at the time of publication and certain assumptions ID&E Group believes to be reasonable. Actual results may differ significantly due to various factors.