

# Company Profile

Integrated Design & Engineering Holdings

Group Management Philosophy

Act with integrity and contribute to society through technology and engineering.

Amidst a society that is changing faster than we can imagine and ever more complex social challenges that are arising as a result, the ID&E Group has made it the core of its business to resolve issues with sincerity. At the root of this lies the pioneering spirit to tackle new businesses possessed by Yutaka Kubota, the founder of Nippon Koei, and our history of growth up to the present by continuing to provide solutions based on the accumulation of knowledge represented by technology and engineering. As a consulting and engineering corporate group, we face global social issues that change with the times and keep growing without fear of change to address such issues. We will thus contribute to the realization of a sustainable society.

Our Aims

Mission

Make the World a Better Place

Always maintaining high aspirations, we will work hard to improve our skills, and provide services based on our accumulated technological capabilities

Vision

Providing Unique Value as a Company

Evolving into a cohesive, global corporate group  
Top class worldwide by 2030

Values

Tackle your problems with sincerity and the road ahead shall be clear

“Willingness to Try,” “Valuing Speed,”  
“Entrepreneurial Mindset,” and “Stakeholder Satisfaction”

Group Management Structure

In July 2023, our Group transitioned into a holding company structure. In this structure, the holding company is responsible for the formulation of Group-wide strategies and governance, while each operating company promotes its business flexibly and autonomously. This enables the organization to respond quickly to various changes and demands. We will make the best use of our resources, technology, and talent to open up a new future.



# Consulting Business



## Infrastructure construction and maintenance and various projects providing a foundation for comfortable lifestyles

In Japan, the Consulting Business provides a full range of civil engineering consultation related to infrastructure development, maintenance, and safety for local and national government agencies, such as the Ministry of Land, Infrastructure, Transport and Tourism. With proven technologies informed by diverse experience and R&D, the operation has grown into a comprehensive consulting service covering a vast array of projects encompassing the improvement, management, and maintenance of infrastructure supporting daily community life. For overseas countries, we are developing business in Asia, Africa, the Middle East, Central and South America, and other regions mainly under Japanese ODA projects. We play active role in infrastructure development projects that support regional and national development in a wide range of fields, including water resources management, energy, urban and regional development, transportation, agriculture and rural development, the environment, and disaster prevention. ID&E Group is also active on the front lines of global social issues and humanitarian aid across borders. Examples of our activities include environmental measures to combat global warming, and assisting in reconstruction of regions affected by conflict or natural disasters.

# Urban & Spatial Development Business



## Meeting urban development demand with architectural design and civil services worldwide

Nippon Koei launched the Urban & Spatial Development Business in March 2016 when it welcomed BDP of the UK into the Group. The aim of the launch of this business segment is to expand business by capturing the growing needs in the architectural domain as urban development progresses around the world and combining it with the civil engineering domain, an area in which we excel. Through collaboration with BDP, we are working to create urban spaces in Asia by combining civil engineering and architectural technologies. We are also working to diversify our business fields by adding Canada-based Quadrangle, which specializes in high-rise buildings, to our group in 2019, and UK-based Pattern, which specializes in sports facility to our group in 2021. Japan that need to be approached from both civil engineering and architectural perspectives, such as urban development and rejuvenation, we merged the urban & spatial development unit of Nippon Koei with one of its group company named Tamano Consultants, and then formed a new company, Nippon Koei Urban Space, in July 2022. By integrating the technologies and functions of both companies, we aim to enter the market for urban infrastructure formation in Japan and overseas, and become a comprehensive producer with greater proposal and development capabilities than ever before for urban and regional rejuvenation projects, public-private partnerships, and smart city development, in order to work toward the formation of sustainable cities.

# Energy Business

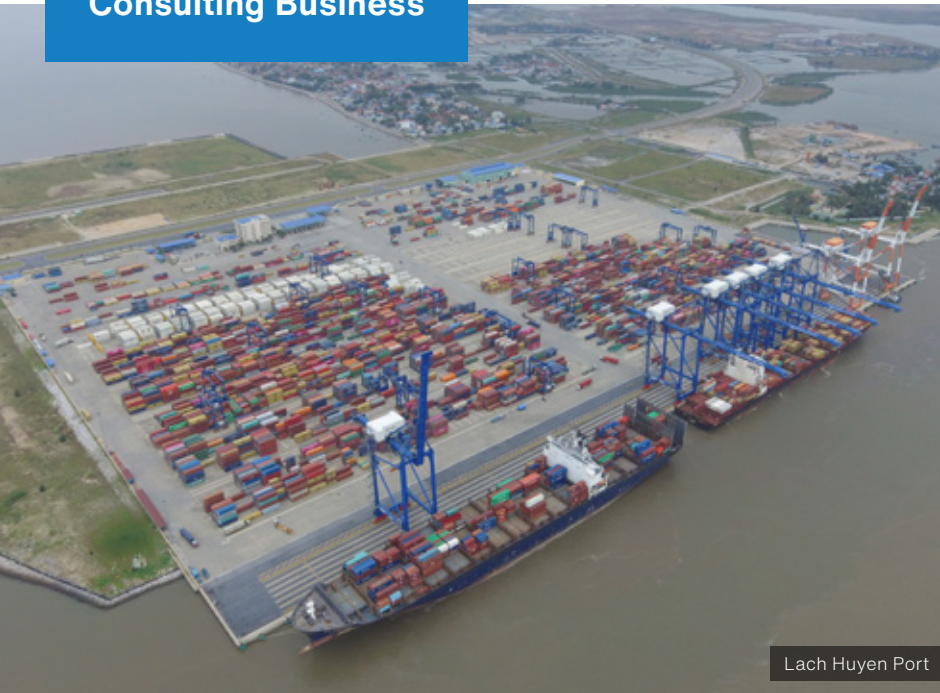


## Helping Japan and other countries meet electric power demand

The segment constructs and repairs substations, switching stations, and power plants operated by power companies constructs central monitoring and control systems to improve operating efficiency, constructs dam control systems at hydropower plants, and manufactures related equipment. The Energy Business proposes optimal solutions for electric power companies to support electric power development and meet electric power needs in Japan and emerging countries. As a new initiative, we are engaged in research, development, design, construction, management and operation support, and system and technology development for energy management projects utilizing distributed energy resources in response to the recent expansion of renewable energy markets and power system reforms in Japan and overseas. We are accumulating business and technological know-how in Europe, where the business environment is well established through the unbundling of power generation and transmission system, and the renewable energy penetration is generally high, and are aiming to expand our business in Japan and other Asian countries in the future. ID&E Group is also involved in the business of operating hydroelectric power plants and sale of electricity. We install small-scale hydroelectric power plants in existing dams that are originally not used for power generation purposes to generate clean electricity by an economical measures.

\* FYE June 2027 Plan





Lach Huyen Port



Torrential Rain Disaster Response



Tsuruta Dam



Dhaka MRT Line 6



New Taketa Bridge

# Japan's No.1 engineering consulting company, involved in building infrastructure around the world and supporting people's safety and security

Since our founding in 1946, we have carried out projects related to the fundamentals of nation building and human resource development in more than 160 regions. Specialists in various fields come together to respond quickly and accurately to the constantly changing needs of society with comprehensive capabilities.

## Main Services

### Rivers, water resources, and hydropower development

Research, design, and construction supervision for flood prevention in river areas, improvements to water use efficiency and water environments, and hydroelectric power generation

### Dams and power generation

Providing technology for the construction of new dams, redevelopment of existing dams, extension of their service life

### Agriculture and rural development

Agricultural production base development and planning, farming support, organization enhancement, food value chain enhancement, nutrition improvement support

### Water, sewerage, and urban drainage

New construction, updating, and remodeling of facilities, flood control measures, earthquake countermeasures, confluence improvement measures, maintenance plans, business management support

### Disaster prevention and mitigation

Stabilization for landslides, steep slopes, and dam reservoir slopes, road disaster prevention, erosion control, emergency and permanent measures in times of disaster

### Defense

Development of defense infrastructure such as in Self-Defense Force camps, bases, and airfields

### Urban planning and development

National, prefectural, and municipal concepts, wide-area plans, and master plans, recovery and reconstruction planning and support, smart city concepts and planning, smart industrial park planning and design, TOD planning, tourism planning, walkable plans, building design and construction management overseas

### Traffic planning

Traffic volume surveys and estimations, urban traffic management (traffic safety, facilitation measures), ITS utilization plans, public transportation planning, autonomous driving demonstration tests, big data analysis for the flow of people, logistics, etc., MaaS

### Ports and airports

Investigation, planning, design, construction supervision, and maintenance of port infrastructure and climate change measures (coastal protection, tsunami protection, CNP, etc.), airport infrastructure (airports, heliports, flying cars, spaceports, etc.), upgrading of functions, studies regarding operational efficiency

### Roads, bridges, and tunnels

Investigation, planning, analysis, and design (including seismic reinforcement and functional maintenance of structures) of roads (road maintenance, improvement, road traffic measures, etc.), bridges, earth structures, tunnels, underground spatial structures, and more, road project supervision, etc.

### Railways

Drafting of railway plans, railway facility design, bidding support, and construction supervision for developing countries, planning, design, and construction supervision for railway systems, design of railway structures in Japan

### Infrastructure/asset management

Inspection, diagnosis, life-extension planning, and management support for various social infrastructures, development and utilization of AI and monitoring technology, infrastructure maintenance DX, infrastructure evaluation, design of conservation measures and maintenance plans based on evaluation results

### Public-private partnerships

Feasibility studies when considering introduction, advisory services related to public offerings and selection of business operators, monitoring of operation and maintenance, management support services (PPP/PFI, comprehensive private outsourcing, etc.)

### Environment

Environmental and social impact assessments, decarbonization and climate change measures, green infrastructure, forest conservation, biodiversity conservation, resource recycling formation, sustainability/ESG due diligence

### Geology and soil

Geological surveys and analysis related to infrastructure foundations, soft ground analysis and design, seismic analysis, groundwater flow analysis, ground environmental pollution surveys

### Information

DX strategy planning, development of remote control systems for infrastructure equipment, platform development and operation, IoT equipment development, 5G communications network development, AI solutions development

### Disaster management

Disaster prevention planning, disaster prevention community development, natural disaster risk communication

### Satellite information services

Disaster damage assessments, infrastructure monitoring related to disaster prevention and mitigation, vegetation management, agricultural production management

## Group Companies

Nippon Koei Co., Ltd./Nippon Civic Consulting Engineers Co., Ltd./Geoplan Namtech Inc./Koei Research & Consulting Inc./Nippon Koei Latin America-Caribbean Co., Ltd./Nippon Koei Lac, Inc./Nippon Koei Latin America-Caribbean, Mexico S.De R.L. De C.V./Nippon Koei India Pvt. Ltd./Nippon Koei Bangladesh Ltd./Nippon Koei Vietnam International Co., Ltd./Philkoei International, Inc./Pt. Indokoei International / Myanmar Koei International Ltd. / Pt. Cikaengan Tirta Energi / NIPPON KOEI MOBILITY SDN.BHD.





Coventry University, College of Arts and Society



NFT for the Nakagin Capsule Tower



Ahmad bin Ali Stadium



The Well



Christie Paterson Cancer Research Centre

## We fuse our passion for architecture and engineering with user-centred design.

BDP is a continuous collective of architects, engineers, designers and urbanists. We design at every scale from city masterplans, neighbourhoods, parks, streets and buildings to specialist, bespoke light and acoustic installations. BDP is a crucial part of the ID&E Group's Urban and Spatial Development business which aims to deliver large scale infrastructure projects and world-class solutions for better, more prosperous places.

### Main Services

#### Culture & Leisure

We expertly design and refurbish cultural and leisure projects, preserving their character while modernizing them for the 21st century, including concert halls, theatres, museums, and visitor attractions.

#### Education

Our user-centric design approach creates exceptional, sustainable educational environments that inspire users, exceed 21st-century pedagogical requirements, and leverage innovative BIM technology.

#### Healthcare

We design healthcare buildings focusing on clinical efficiency and patient care, ensuring spaces are effective yet people-centric, benefiting patients, visitors, and staff alike.

#### Heritage

We preserve and enhance heritage sites, ensuring they meet modern standards while honoring their history, through conservation, sustainable materials, and collaboration with statutory authorities.

#### HOUSING

BDP designs innovative housing projects, from city center regeneration to suburban districts and urban extensions, matching the rapid pace of global urbanization through their international studio network.

#### Media Environments

BDP creates media environments for top clients like Netflix and CBS, integrating design excellence, acoustical performance, and technical expertise to support the entertainment industry's creative output and production facilities.

#### Retail

BDP leads in retail design, creating unique urban and standalone solutions, from open streets to multilevel destinations, tailored to each brief and location.

#### Science, Research & Technology

BDP designs adaptable, sustainable, and collaborative spaces for scientific research, integrating advanced technology and low energy performance to create cutting-edge, flexible environments for bluechip clients in life sciences and workplaces.

#### Sport

BDP creates high-profile sport venues with a focus on innovative design, technical excellence, and enhancing the collective sporting experience, through their specialist division, BDP Pattern.

#### Transport

BDP creates integrated, sustainable transport solutions, from city-scale masterplans to award-winning passenger facilities, catalyzing urban regeneration through modern construction techniques and flexible design to enhance urban environments.

#### Urbanism

BDP's multidisciplinary teams create sustainable, inclusive urban environments through masterplanning, town planning, and landscape design, working collaboratively with clients and communities to enhance cities worldwide.

#### Workplace

Our architects design award-winning offices worldwide, emphasizing high-quality interiors, sustainability, and innovation, creating efficient, supportive, and inspiring workplaces for major brands and institutions.

#### Group Companies

Nippon Koei Urban Space Co., Ltd. / BDP Holdings Limited / Building Design Partnership Limited / Quadrangle Architects Limited / Kisho Kurokawa Architect & Associates Co., Ltd.

### About Nippon Koei Urban Space Co., Ltd.

Nippon Koei Urban Space Co., Ltd. was established in 2022 in order to provide a one-stop service that combines the civil engineering and architectural fields, as well as to enter and expand business in the urban and spatial development market both in Japan and overseas. We provide comprehensive research and consulting services related to urban space and infrastructure development.

Nippon Koei Urban Space Co., Ltd., together with the experts of the BDP Group, will respond to the demand for urban development both in Japan and overseas. Utilizing the ID&E Group network, we aim to become a comprehensive business production company with greater proposal and development capabilities than ever before.







Shin-Tochigi Substation



Akan Microgrid



Shin-Sogi Hydropower Station



Fukushima Office



Battery-Based Energy Storage System in Ruien

## Providing one-stop services for clean energy

We operate businesses that play a critical role in ensuring a stable supply of electricity, a fundamental necessity for daily life, both in Japan and across the globe. As the power and energy businesses around the world enter a period of transformation, we will respond to diverse needs and create new value with consistent systems and high-level technological capabilities centered on energy.

### Main Services

#### Energy development and operation

We develop, operate, and market energy resources based on carbon neutrality and electricity liberalization, supporting energy conservation.

#### Battery ancillary services

- European battery aggregation business, large battery EPC business
- Planning and forming new businesses and new investment projects related to renewable energy and storage batteries in Japan and overseas

#### Domestic hydro development, O&M

- Site surveys, hydrological analysis, overall layout studies
- Civil/electromechanical design, consensus building, construction supervision
- Power generation operation, maintenance and management, business company operation

#### Aggregation business

- Proprietary market transactions in supply-demand adjustment markets, capacity markets, etc.
- Market trading agency using power storage stations and generators

#### Energy-saving services

- Supporting compliance with environmental laws and regulations such as the Energy Conservation Act
- Supporting the formulation of greenhouse gas reduction plans
- Cloud-based energy management support services

#### Manufacturing

With our manufacturing sites, we contribute to the creation of renewable energy with cutting-edge technology.

#### Civil engineering systems-related, disaster prevention-related

- Dam monitoring and control systems, dam release alarm systems
- Rockfall monitoring systems and sediment collapse detection equipment

#### Substation system-related

- Miniature monitoring control panels, N-1 electrical control equipment
- Substation systems

#### Substation equipment-related

- Conservators, hot-line oil purifiers, line traps

#### Energy management-related

- EMS (microgrids, aggregation, renewable energy monitoring)
- Storage systems (multi-vendor systems)

#### Hydroelectric power station related

- Water turbines (Francis, Pelton, cross-flow, propeller, spiral)
- Synchronous generators, induction generators
- Integrated protective control equipment
- Excitation devices
- Speed governors (hybrid, electric, hydraulic)
- Water sprinkler
- General testing equipment for water turbine generators

#### Electric power equipment, civil engineering work, electromechanical consulting

We handle everything from domestic and overseas power equipment installation work to electromechanical consulting and work on renewable energy EPC (Engineering, Procurement, and Construction).

#### Electrical equipment installation work

- Expansion and renewal of facilities such as substations and hydroelectric power plants
- Selection, procurement, and installation work of power receiving and transforming equipment related to renewable energy

#### Electric power civil engineering

- Renewal work for hydroelectric power plants (pipes, foundations, construction)
- Substation civil engineering work
- Civil engineering surveys and diagnoses concerning the above

#### Domestic electromechanical consulting (planning and detailed design)

- Electrical equipment
- Information and communications equipment
- Machinery and equipment

#### Overseas electromechanical consulting (planning, design, construction supervision)

- Power generation facilities
- Power distribution facilities
- Information and communication networks

#### Engineering

- Renewable energy power generation EPC
- Grid storage battery EPC

#### Group Companies

Nippon Koei Energy Solutions Co., Ltd. / Koei System Inc. / Koei Energy Co., Ltd. /  
Nippon Koei Energy Europe B.V. / Ruien Energy Storage Nv





In order to realize the mission of the entire ID&E Group and increase its corporate value, the holding company is responsible for Group-wide governance (covering the Holdings' business management functions) and for providing services to the Group (shared services functions). Assuming the role of "increasing corporate value by providing a bird's-eye view of the entire Group to achieve overall optimization," we will demonstrate our abilities as a group of professionals well-versed in both internal and external situations.

Main Services

Business Management/  
Technology & Human Resources/  
Business Strategy/ Sales & Regional Management

Group Companies

Nippon Koei Business Partners Co., Ltd. /  
Nikki Corporation / Ei Koei Co., Ltd.

ID&E at a glance

Established

1946\*



The company was established in 1946\* by founder Yutaka Kubota, aiming for postwar reconstruction. More than 75 years later, the founding spirit continues on through our Management Philosophy, still flowing through our hearts.  
\* Nippon Koei's founding year

Staff numbers



Approx. 6,700

Aiming to solve social issues, every one of our staff in Japan and abroad continues to take up the challenge and play an active role. We are continually striving to discover and develop professional talent.

Sales in Japan



Nippon Koei has established itself as Japan's No. 1 civil engineering consultant regarding sales\*.  
\* Source: "Sales ranking of engineering consulting firms in Japan," Nikkei Construction, April 20, 2025

Operations

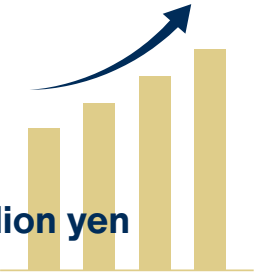


Over 160 countries and regions

Since foundation, we have developed social capital overseas, providing various Japanese technologies abroad.

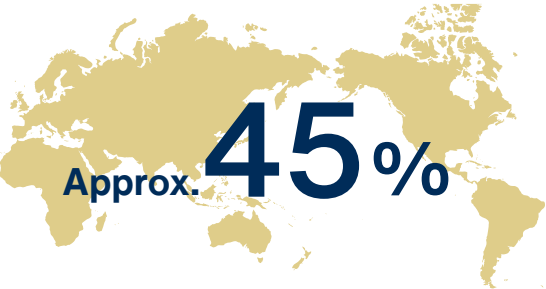
Revenue

Approx. 198 billion yen



Each of the three segments of Consulting, Urban & Spatial Development, and Energy continues to grow, and their sales volume is increasing yearly.

Overseas sales ratio



We aim to increase our overseas sales ratio by meeting the needs of those living in each region with world-class technology.

Project numbers per year



Approx. 9,000

We continue to take on the challenge of solving various national, regional, and everyday problems through various projects.

Group firms

88 companies



Group companies work together to solve problems and create value. We will continue to expand our network and achieve further growth.

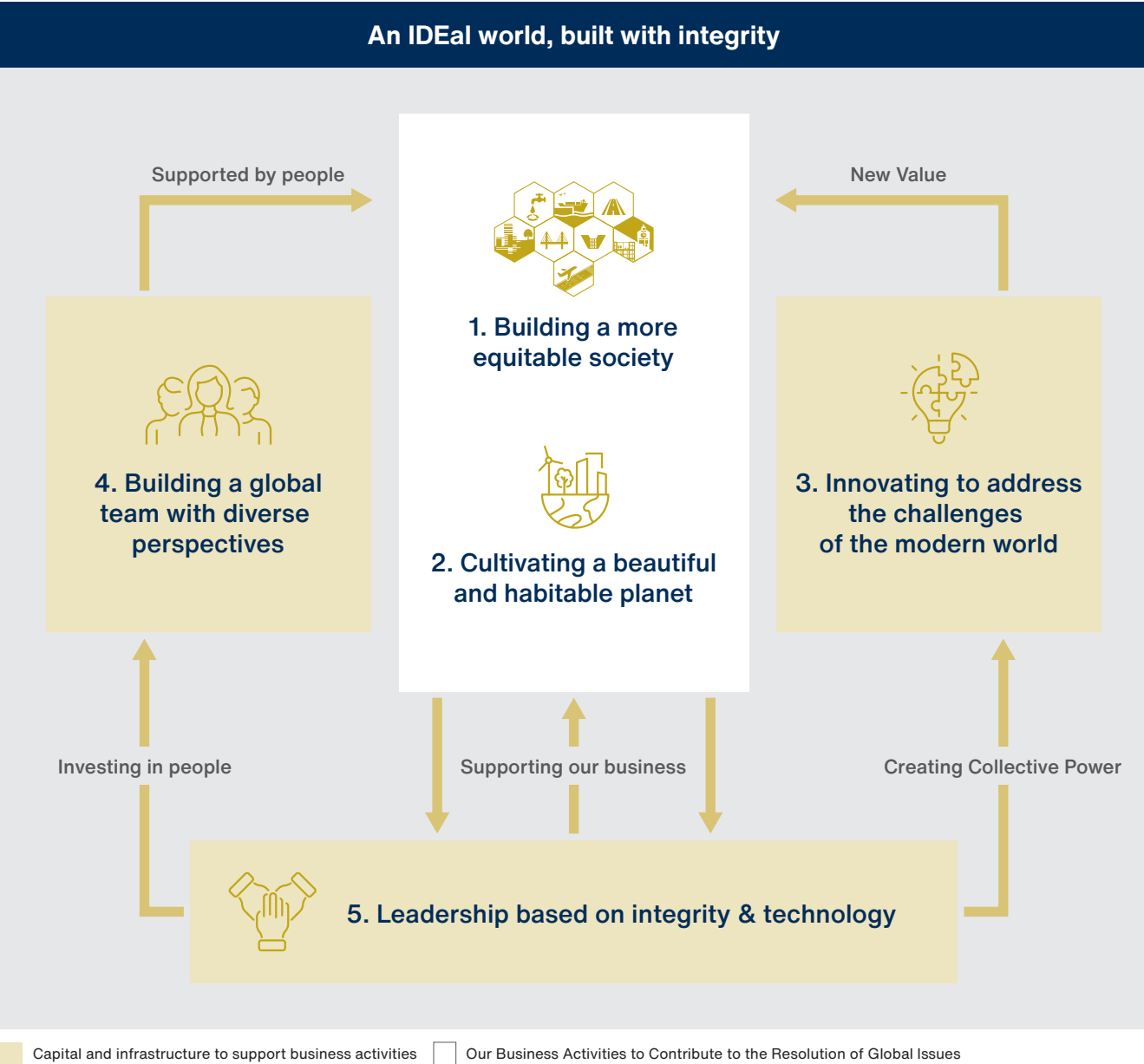
Sustainability

The Management Philosophy of the ID&E Group is "Act with integrity and contribute to society through technology and engineering." We believe that our approach to sustainability is manifest in it. Based on the Management Philosophy, We integrate sustainability into our core corporate management practices and face environmental and social issues, etc head-on, and each and every member works sincerely and with a high level of awareness towards the realization of a sustainable society.

By utilizing the diverse technological capabilities of the ID&E Group and providing sustainable solutions with taking the future into account, we will achieve our mission of "Make the World a Better Place."

Materiality

The world is full of social challenges, and technological advancements are bringing about major changes in the world. In these uncertain times, our Group recognizes that we are being called upon to define the needs for of creating a sustainable society, has therefore formulated "materiality" issues in our Long-Term Management Strategy, and revised them in 2024.



Sustainability Basic Policy and ID&E Holdings Sustainability Management Framework

The Group developed a Basic Sustainability Policy in 2022. This basic policy covers the perspective of how a company's business operations affect society and how it responds to societal demands, and at the same time reflects our commitment to contributing to the development of a sustainable society through our business.



Furthermore, in 2024, we designed the "Sustainability Management Framework" to systematically represent the vision for sustainability management that our entire Group aims for, to share our direction among the group members and to accelerate the promotion of united efforts. This framework consists of "Sustainability Goals" that outline the vision for 2045, "Sustainability Commitments/Targets" that serve as milestones for achieving those goals, as well as policies and action guidelines for each issue.

Signatory of the UN Global Compact

ID&E announced its support for the United Nations Global Compact (UNGC) in June 2019. ID&E Holdings will carry on this UNGC signature and promote support for UNGC throughout the Group.



TCFD

We recognize that addressing climate change is one of the most important sustainability issues. In 2023 we declared our support for the TCFD and have been disclosing information in line with its recommendations. Going forward, we will continue to promote disclosure that meets various climate change-related requirements, with a focus on information disclosure based on the TCFD recommendations.

Well-Being Management System

In order to put the ID&E Group's Management Philosophy into practice, we believe that the first priority is the health of staff and their families. This is the reason why we promote health management.



ID&E Global Academy

The ID&E Global Academy was established in June 2024 as a learning ecosystem to grow together with society. The academy is a learning ecosystem for all members of the ID&E Group to grow together, providing an environment where they can learn the skills, knowledge and information necessary to succeed in the world.





History

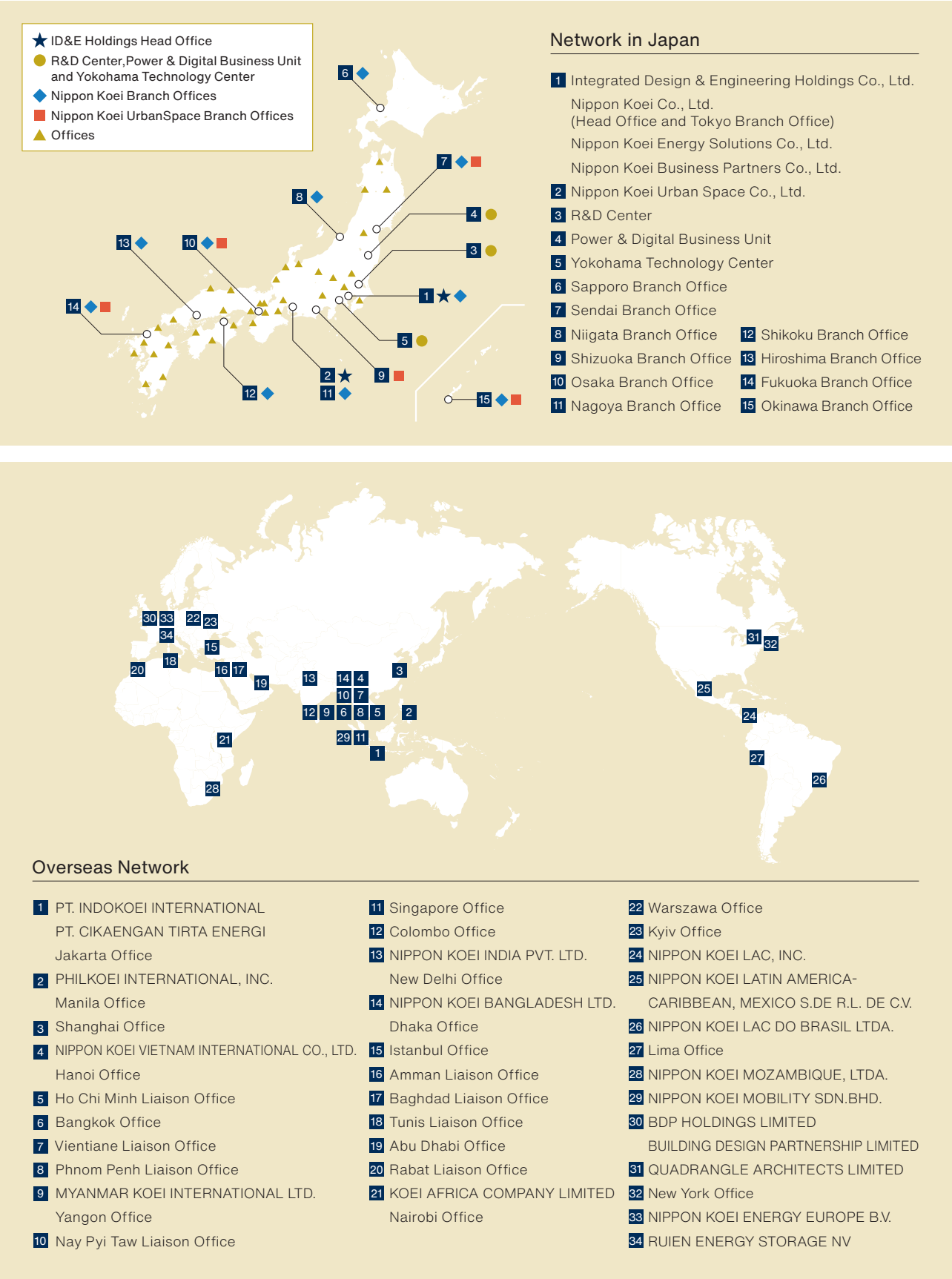
1946	Nippon Koei established in Chiyoda-ku, Tokyo
1954	Received order for planning of Baluchaung Hydropower Plant in Burma (Company's first overseas project)
1958	Acquired Nikki Manufacturing Co., Ltd. (name changed to Nikki Corporation in July 1982, currently a consolidated subsidiary)
1963	Tokyo Stock Exchange Shares listed in the Second Section of the Tokyo Stock Exchange
1978	New head office building completed in Kojimachi, Tokyo; relocated head office Listing moved to the First Section of the Tokyo Stock Exchange
1986	Koei System Inc. established (currently a consolidated subsidiary)
1989	Philkoei International, Inc. established in the Philippines (currently a consolidated subsidiary)
1992	Pt. Indokoei International established in Indonesia (currently a consolidated subsidiary) EI Koei Co., Ltd. established (currently a consolidated subsidiary)
1995	Kri International Corp. established
2003	Nippon Koei Latin America-Caribbean Co., Ltd. established (currently a consolidated subsidiary) Nippon Civic Consulting Engineers Co.,Ltd. became a subsidiary (currently a consolidated subsidiary)
2005	Tamano Consultants Co., Ltd. became a subsidiary
2007	Nippon Koei Lac do Brasil Ltda. established in Brazil (currently a consolidated subsidiary)
2008	Nippon Koei India Pvt. Ltd. established in India (currently a consolidated subsidiary)

2010	Nklac, Inc. established in Panama (name changed to Nippon Koei Lac, Inc. in September 2011, currently a consolidated subsidiary)
2012	Nippon Koei Vietnam International Co., Ltd. established (currently a consolidated subsidiary)
2013	Myanmar Koei International Ltd. established in Myanmar (currently a consolidated subsidiary)
2015	Koei Energy Co., Ltd. established (currently a consolidated subsidiary)
2016	UK-based architectural design company BDP Holdings Limited became a subsidiary (currently a consolidated subsidiary)
2017	Koei Research & Consulting Inc. established (Koei Research Institute International Corp. and System Science Consultants Co., Ltd. merged)
2018	Nippon Koei Bangladesh Ltd. Established in Bangladesh Nippon Koei Energy Europe B.V. Established in Netherlands (currently a consolidated subsidiary)
2019	Canada architectural design company Quadrangle Architects Limited became a subsidiary (currently a consolidated subsidiary)
2020	New head office building completed in Kojimachi, Tokyo (reconstruction)
2021	75th Anniversary Project Implemented UK architectural design company Pattern Design Limited became a subsidiary
2022	Nippon Koei Urban Space Co., Ltd. launched
2023	Integrated Design & Engineering Holdings Co., Ltd. established Transition to holding company structure
2025	Delisted from the Prime Market of the TSE. Transitioned to a wholly owned subsidiary of Tokio Marine Holdings, Inc.

Network



Scan for more information





# Company Information

## Company Outline

Corporate name	Integrated Design & Engineering Holdings Co., Ltd.	
Representative	Hiroaki Shinya, Representative Director and President	
Established	July 3, 2023	
Capital	7,553 Million yen (As of October 25, 2024)	
Description of business	Management of business actives and related thereto of group companies	
Head office	5-4 Kojimachi, Chiyoda-ku, Tokyo 102-8539, Japan TEL: +81-3-3238-8030	

## Main Group Companies

	Nippon Koei Co., Ltd. 5-4 Kojimachi, Chiyoda-ku, Tokyo 102-8539, Japan TEL: +81-3-3238-8030	
	Nippon Koei Urban Space Co., Ltd. 2-17-14 Higashisakura, Higashi Ward, Nagoya City, Aichi Prefecture TEL: +81-52-979-9111	
	BDP Holdings Limited 11 Ducie Street Piccadilly Basin Manchester M1 2JB United Kingdom TEL: +44-161-828-2200	
	Nippon Koei Energy Solutions Co., Ltd. 5-4 Kojimachi, Chiyoda-ku, Tokyo 102-8539, Japan TEL: +81-3-3238-8030	
	Nippon Koei Business Partners Co., Ltd. 5-4 Kojimachi, Chiyoda-ku, Tokyo 102-8539, Japan TEL: +81-3-3238-8030	



**Integrated Design & Engineering Holdings CO.,LTD.**

5-4 Kojimachi, Chiyoda-ku, Tokyo 102-8539, Japan

<https://www.id-and-e-hd.co.jp/english/>